



EAP160HUVC Multistage Air Purifier
True HEPA, VOC filter, UV lamp, TiO₂ photo catalysis (PCO),
plasma ionizer, advanced activated carbon

USER MANUAL



Thank you for choosing this innovative ElectriQ Air Purifier
Please read this user manual before using the product and
keep it safe for future reference.

Visit our page www.electriQ.co.uk for our entire range of Intelligent Electricals

CONTENTS

1. SAFETY INSTRUCTIONS	3
2. AIR PURIFIER FEATURES AND INDOOR POLLUTANTS	4
4. OPERATION	5
5. FILTER INSTALLATION	5
6. DIAGRAM OF THE AIR PURIFIER	6
7. CONTROL AND SETTINGS	7
8. TROUBLESHOOTING	8
9. APPENDIX AND TECHNICAL DATA	9

SAFETY INSTRUCTIONS

Important!

- Carefully read the instructions before operating the unit
- This appliance is for indoor use only.
- Rating: This unit must be only connected to a 220-240 V / 50 Hz earthed outlet.
- Installation must be in accordance with regulations of the country where the unit is used.
- If you are in any doubt about the suitability of your electrical supply have it checked and, if necessary, modified by a qualified electrician.
- This air purifier has been tested and is safe to use. However, as with any electrical appliance - use it with care.
- Disconnect the air purifier from socket when changing the filters or cleaning the unit.
- Avoid touching any moving parts of the appliance.
- Never insert fingers, pencils or any other objects through the guard.
- This device is not intended for use by persons (including children) with reduced physical, sensory or mental capabilities. It is also not intended for use by those with a lack of experience and knowledge, unless they have been given supervision or instruction concerning the use of the appliance by a person responsible for their safety.
- Do not leave children unsupervised with this device.
- Do not clean the unit by spraying it or immersing it in water. Use a damp cloth only. Never allow water or vapours to enter the unit.
- Do not clean with strong chemical agents or other abrasive materials.
- Never connect the unit to an electrical outlet using an extension cord. If a power outlet is not available, one should be installed by a qualified electrician.
- Never operate this appliance if the cord or power supply is damaged. Ensure the power cord is not stretched or exposed to sharp object/edges.
- A damaged power supply should be replaced by the manufacturer. Never extend or attempt to change the power supply lead.
- Any service other than regular cleaning or filter replacement should be performed by an authorized service representative. Failure to comply could result in a voided warranty.
- Do not use the appliance for any other purposes than its intended use.
- Avoid removing the power cord from socket while unit is still in operation. This could cause electrical damage.
- Never use the power supply as a switch to start and turn off the air purifier unit. Use the provided ON/OFF switch located on the control panel.
- Always place the unit on a dry and stable surface.
- The use of accessory attachments that have not been approved by the appliance manufacturer is not recommended, as this may result in fire, cause an electric shock and/or cause personal injury.
- Ensure hands are fully dried before plugging or unplugging the appliance.
- The appliance should not be installed in laundry or wet rooms.

Energy Saving and Unit Safety Protection Tips

- Do not cover or restrict the airflow from the outlet or inlet grills.
- For maximum performance and safety the minimum distance from a wall or objects should be 20 cm. Keep away from other electrical appliances.
- Keep the filters clean. Under normal conditions, filters should only need cleaning once every two weeks (approximately). Since the filters remove airborne particles, more frequent cleaning maybe necessary, depending on the air quality.

EAP160HUV provides 6 stages air purification using professional air filtration and intelligent sterilisation technologies.

- Advanced activated carbon filter - removes unpleasant odours and absorbs harmful substances as formaldehydes and benzenes
 - Antibacterial True HEPA filter - to remove 99.9 % of airborne particles of 0.25 micrometres or larger
 - VOC filter - to remove toxic volatile organic compounds and unpleasant smells
 - Ultra-violet light - UV light treatment to kill airborne bacteria, germs and viruses
 - TiO₂ filter - Titanium Dioxide screen to maximise UV effectiveness to kill 99.9% of germs
 - Plasma Ioniser - sterilizes even further and removes mould spores and allergens from the air
- Also EAP160HUV features air quality LED indicator that will help in monitoring the quality of the air.

Applications:

- Personal use in domestic and office space to improve air quality
- Helps smokers to minimise the effects of smoking
- Helps asthma and pollen sufferers
- Schools, hospitals, hotels, pubs and other public spaces to enhance clean standards

Notes:

This air purifier is not a substitute for proper ventilation, regular vacuum cleaning or for the use of a cooker hood while cooking.

If the humidity is over 60% Relative Humidity we recommend using a dehumidifier to reduce the humidity.

Information on Indoor Pollutants:

VOC (Volatile Organic Compound) – VOC's come from motor vehicle exhausts, gasoline vapour, pollutants such as formaldehyde, ammonia and many other common and chemical solvents - like paints and glues or can be a by-product of mould growth. VOC's cause irritation to the eyes and or nose as well as causing headaches, nausea, and even potential damage to the central nervous system. Pressed wood furniture, newly decorated rooms, paint and cleaning solvents are common sources of VOC's.

MOLD / FUNGUS – These can affect our respiratory system and cause allergic reactions, like a runny nose, eye and throat irritation, headaches, fatigue and aggravation of asthma. Other indoor pollutants include - bacteria, viruses, dust mites and pollen, etc.

Emissions from electronic office equipment – Many studies, including those from EPA and the University of California Berkeley, have reported that emissions from office equipment like, computers and printers etc. include VOC's, ultra-fine particles and ozone.

These emissions have been proven to have a negative effect on the health of many people.

Using HEPA and Carbon Activated filters, Plasma Ionization, VOC Filter, TIO₂ photocatalyst and UV light.

An effective **HEPA** filter is absolutely necessary to remove particles, even at a microscopic level; it ensures that the particles are not spread. **Plasma ioniser** will sterilise the air and reduce bacterial growth.

UV light dramatically improve Indoor Air Quality by destroying airborne bio-contaminants such as viruses and bacteria which may be a leading cause infections and discomfort. Ultraviolet air treatment systems have been used for more than 50 years in hospitals and various other healthcare industries but with the advent of small high-efficiency UV Lamps now the technology finds place in the domestic environment.

Photocatalytic oxidation (PCO) is achieved when you combine UV light rays with a **TiO₂** (titanium oxide) coated filter. Your ElectrIQ air purifier features an advanced VOC Filter coated with TiO₂ filter. This process of photo catalytic oxidation creates hydroxyl radicals and super-oxide ions, which are highly reactive electrons which will react with other elements in the air such as bacteria and especially VOCs. Once bound together, the chemical reaction takes place between the super-charged particle and the pollutant, effectively burning ("oxidizing") the pollutant. This breaks the pollutant down into harmless carbon dioxide and water molecules, making the air even cleaner.

The **antibacterial activated carbon** is a natural material biosynthesized from walnut shell, the adsorption area of activated carbon is very large up to 900,000 square meters. The activated carbon filter will absorb unpleasant odours and will help decomposing VOCs when combined with the TIO₂ filter and UV light.

Operation Instructions

Before first use

Please remove any packing and plastic films before using your air purifier. Please assemble the unit and install the filters as per filter changing instructions.

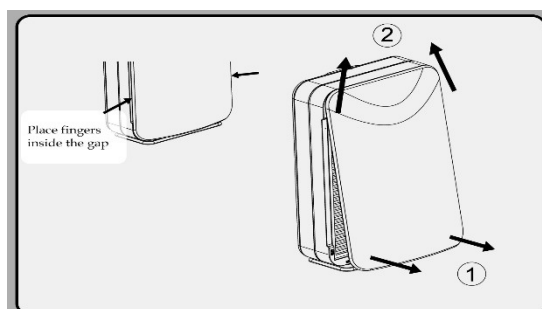
High performance True HEPA (E) and Advanced Activated Carbon (D) filters are not washable, keep them dry at all times and vacuum regularly.)

1. Unplug the unit from the socket.
2. Turn the unit around with front panel facing you
3. Press filter housing release buttons at the bottom of the panel, insert fingers on the inside gaps then gently pull out the front panel to get access to filter chambers
4. To replace the filters following full instructions. When putting new filters in, ensure always the front side is facing outward. Only install filters in the order advised in this manual.
5. The device should not be turned on until the sliding door is closed completely

Installing or replacing the Filters

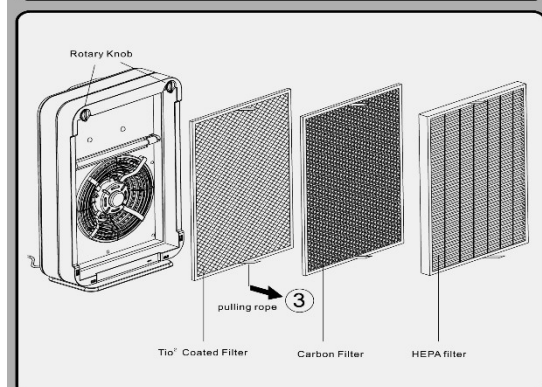
Remove Front Panel

Press filter housing release buttons (1) at the bottom of the panel, insert fingers on the inside gaps then gently pull out the front panel. Then slide the panel upwards on the direction of the control panel (2)



Removal / Installation of filters

Rotate the filters locks with 180 degrees until filters are released. Remove HEPA, Carbon and the VOC TIO₂ filter in this order. If replacing the filters reverse the operation and lock back the rotary knob securing the filters in place. Only remove the filters by pulling the rope (3) gently. Please make sure each filter is lined up correctly with rope facing outwards.



Re-sitting the front panel

Hook the front panel on to the rotary knobs and slide as shown by the direction of arrow (4) then push it into base and block groove in the direction of arrow (5).

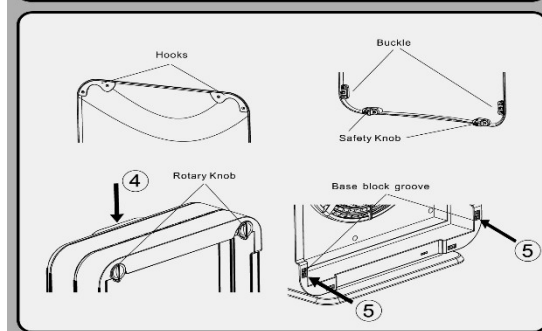
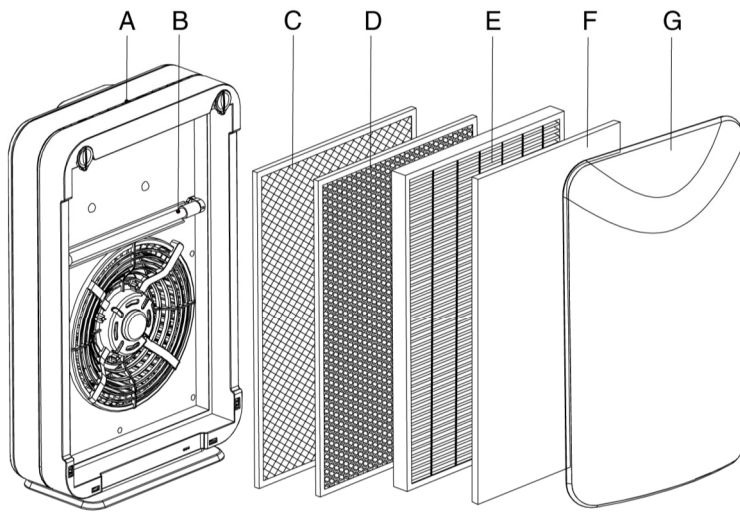
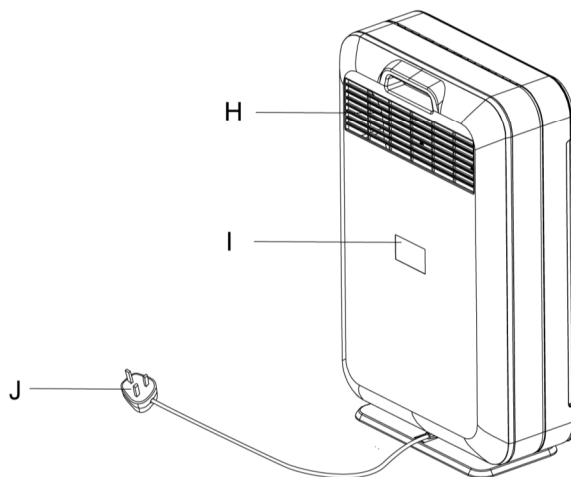


Diagram of the Air Purifier



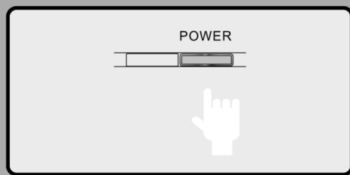
- A. Body assembly and control panel
- B. UV light
- C. VOC filter TIO2 coated
- D. Advanced activated carbon filter
- E. True HEPA filter
- F. Pre-Filter
- G. Front Panel
- H. Air outlet
- I. Name plate
- J. Power cord and plug



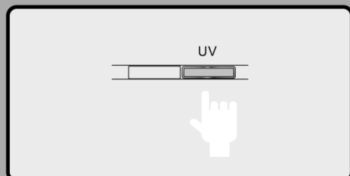
Controls and Settings



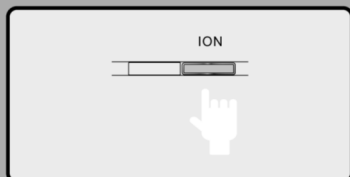
Air Quality LED EAP160HUVC multi stage air purifier is featuring an intelligent air quality sensor. When air quality is poor the sensor LED light will turn RED. When air quality is better the led will become pink. When air quality is good the LED will turn to blue.



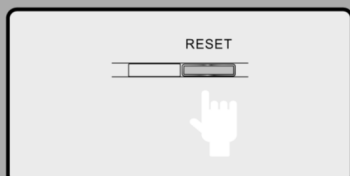
Press “**POWER**” key and the air purifier will start operating at default medium speed, ioniser and UV lamp will be on at the same time.



“**UV**” key turns on or off the UV light.



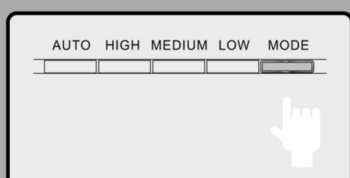
“**ION**” key turns on or off the plasma ioniser



When HEPA filter is replaced press “**Reset**” key for 5 seconds to reset the HEPA life cycle counter.



“**Timer**” key cycles between stopping timer operation: 2 hour, 4 and 8 hours stopping timer (8H, 4H, 4H)



“**MODE**” key cycles between 3 fan speeds
Fan speed: **Low** / **Medium** / **High**

Troubleshooting

The Air purifier does not seem to work	Is the power plug disconnected from the wall socket? Is the socket switched on? The front panel may not be installed properly, please re-install.
No clean air is delivered	Please ensure filters are cleaned and the packing was removed from the filters
Abnormal noise during operation	Air inlet or outlets may be blocked. Remove obstruction and try again. If this fails contact ElectriQ support centre

APPENDIX



Disposal: Do not dispose this product as unsorted waste. Collection of such waste must be handled separately as special treatment is necessary.

Recycling facilities are now available for all customers at which you can deposit your old electrical products. Customers will be able to take any old electrical equipment to participating sites run by their local councils. Please remember that this equipment will be further handled during the recycling process, so please be considerate when depositing your equipment. Please contact the local council for details of your local household waste recycling centres.

Technical Data

Model	EAP160HUVC		
CADR	160 CFM (272 m³/hr)		
Fan Speed	Low	Medium	High
Airflow (m ³ /hr)	94	145	272
Noise level (db)	29	38	46
Power rating (W)	80		
Ions	3x10 ⁶ ions/cm ³		
Power cord length	1.8 meters		
Net Size (wxdxh)	39.6x 19.7x 61.5cm		
Net Weight	7.4 kgs		
Voltage	220-240 V, 50 hz		
	UV Lamp		
Size	Power Rating	Wave Length	Life time
T5	15 W	254 nm	>9,000 hrs
	TIO2 Filter		
Size (wxdxh)	Anti-Bacterial Performance	Particle Size	Life Time
35.5x 0.7x 52 cm	99 %	-	Life of the unit
	HEPA Filter		
Size (wxdxh)	Efficiency	Particle Size	Life Time
35.5 x 2 x 52cm	99.9%	≤0.00025 mm	>1 year
	Carbon Activated Filter		
Size (wxdxh)	Material	Active Filter Absorption Surface	Life Time
35.5 x 1 x 52 cm	Walnut Shell	900,000 m ²	>1 year

UK PRODUCT SUPPORT
www.appliancesdirect.co.uk

Please, for your own convenience, make these simple checks before calling the service line.

1. Is the unit plugged into the mains?
2. Is the power supply OK?
3. Have you cleaned or changed the filters if the unit lost efficiency?
4. Switch the unit off and wait three minutes to see if the issue is resolved. Restart the unit.

If the unit still fails to operate call: 0871 620 1057 or complete the online form

Office hours: 9AM - 5PM Monday to Friday

www.electriQ.co.uk

Unit 2, The Nursery

Berristow Lane

South Normanton

Derbyshire, DE55 2FX