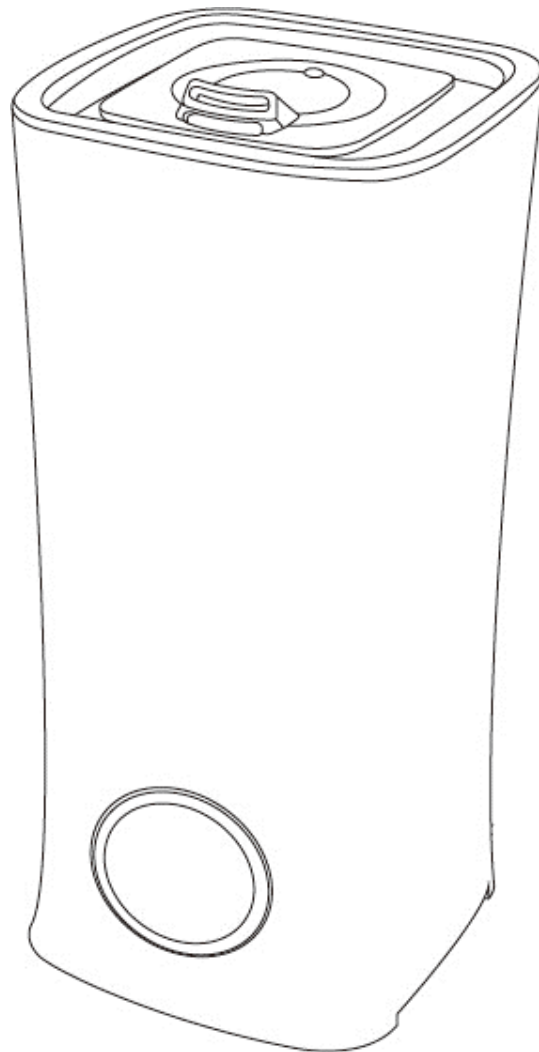


electriciQ

USER MANUAL



ULTRASONIC HUMIDIFIER WITH LED LIGHT AND AROMA FUNCTION

Thank you for choosing this innovative electriciQ Humidifier.
Please read this user manual before using the product and keep it safe for future reference.
Visit our page www.electriciQ.co.uk for our entire range of Intelligent Electricals

CONTENTS

SAFETY INSTRUCTIONS	3
INTRODUCTION	4
PRODUCT DIAGRAM	4
PARTS SUPPLIED	4
OPERATION	5
CONTROL PANEL	5
WATER LEVEL WARNING	6
FILLING THE WATER TANK	6
AROMATHERAPY FUNCTION	6
CARE AND MAINTENANCE	7
EMPTYING THE WATER TANK	7
REPLACING THE FLOAT VALVE	7
TROUBLESHOOTING	8
TECHNICAL DATA	9
UK PRODUCT SUPPORT	9

SAFETY INSTRUCTIONS

Important!

- Carefully read the instructions before operating the unit
- This appliance is for indoor use only.
- Rating: This unit must be only connected to a 100-240 V / 50/60 Hz outlet.
- Only use with the power cable provided by the manufacturer
- This humidifier has been tested and is safe to use. However, as with any electrical appliance - use it with care.
- Disconnect the humidifier from the socket when cleaning or refilling the unit
- This device is not intended for use by persons (including children) with reduced physical, sensory or mental capabilities. It is also not intended for use by those with a lack of experience and knowledge, unless they have been given supervision or instruction concerning the use of the appliance by a person responsible for their safety.
- Do not leave children unsupervised with this device.
- Do not clean the unit by spraying it or immersing it in water. Use a damp cloth only
- Do not clean with strong chemical agents or other abrasive materials.
- Never operate this appliance if the power cord is damaged. Ensure the power cord is not stretched or exposed to sharp object/edges. A damaged power supply should be replaced by the manufacturer.
- Never extend or attempt to change the power cord or plug.
- Any service other than regular cleaning should be performed by an authorized service representative. Failure to comply could result in a voided warranty.
- Do not use the appliance for any purpose other than its intended use.
- Never use the power supply as a switch to start and turn off the humidifier unit. Use the ON/OFF button located on the control panel.
- Always place the unit on a flat, dry, waterproof and stable surface.
- Do not place the dehumidifier onto carpet as this would block the vent holes on the underside
- Keep the humidifier at least 10cm from walls and other objects, and at least 1 metre away from the ceiling.
- Do not place the humidifier in direct sunlight, or in places subject to high temperatures.
- Ensure the unit is not situated near computers or other electronic equipment during operation.
- The use of accessory attachments that have not been approved by the appliance manufacturer is not recommended, as this may result in fire, cause an electric shock and/or cause personal injury.
- Ensure hands are fully dried before connecting or disconnecting the power.
- It is recommended to use a humidity meter with the humidifier, in order to maintain a healthy humidity level of 30 to 50%.
- Overuse of the humidifier can cause excessive humidity, which can promote the breeding of mites, mould, and harmful bacteria.
- Do not touch the ultrasonic atomiser after the unit has been switched on, as it will become very hot during operation.

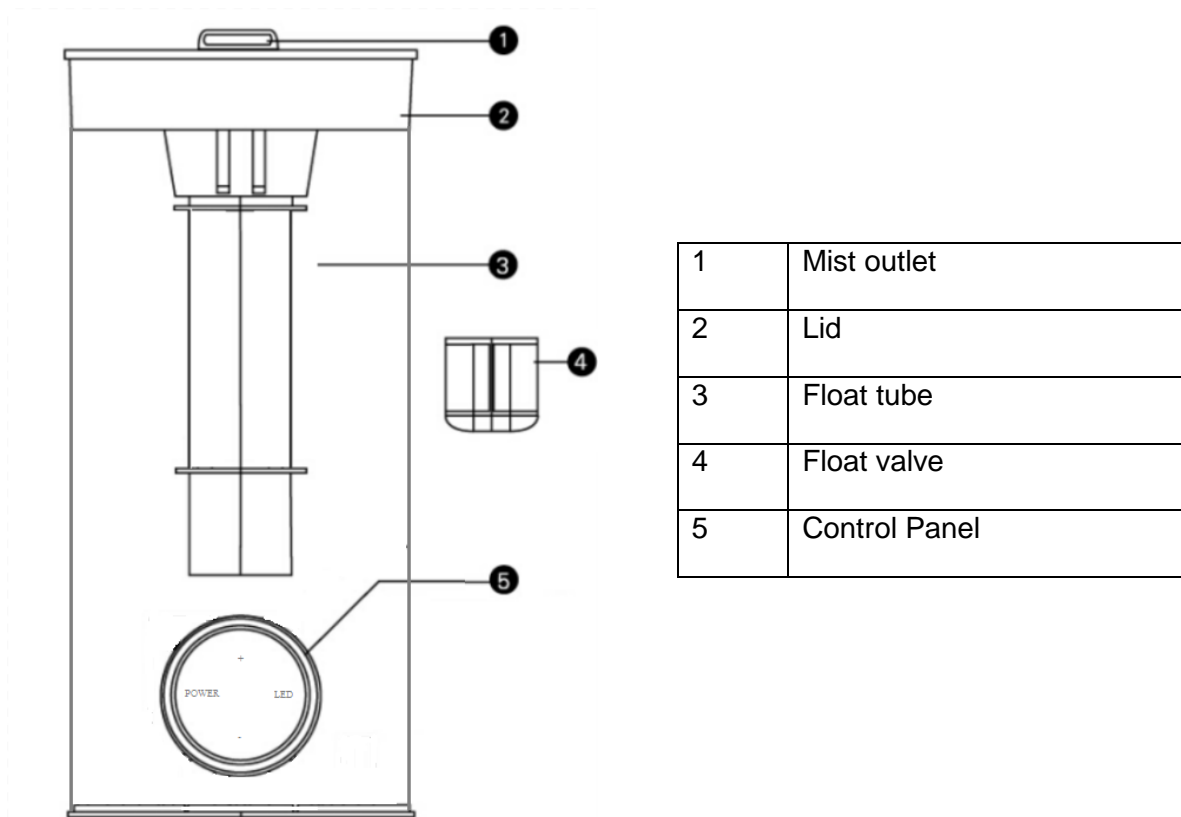
INTRODUCTION

The electriQ eiQ-HUM02 humidifier uses ultrasonic oscillation to add moisture to the air by means of a cool mist. This reduces the dryness in the air which can be an irritant to many parts of the body. It can effectively reduce dryness of the skin, nose, throat and lips, as well as easing some of the symptoms caused by colds and flu.

A humidifier can be used to replace moisture lost from the atmosphere from the use of heating in the winter, or air conditioning in the summer, providing a more comfortable environment.

Please read the manual before using the humidifier, and keep for future reference.

PRODUCT DIAGRAM



PARTS SUPPLIED

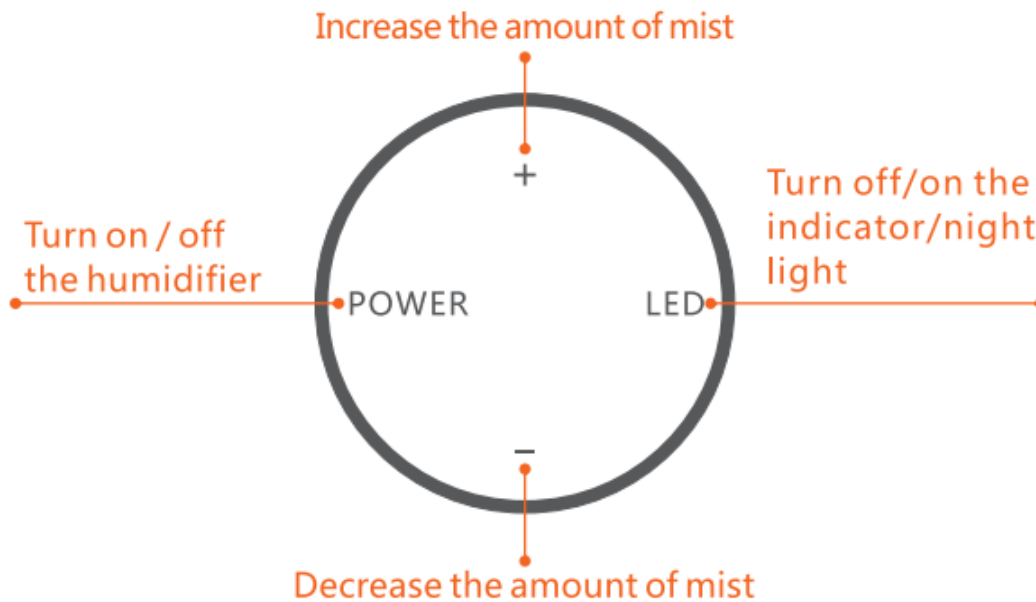
- Humidifier
- Cleaning brush
- 3 x Float Valves (1 fitted plus 2 spares)

OPERATION

1. Remove the lid from the humidifier.
2. Fill the humidifier with tap water ensuring that the water level is above metal probe at the rear of the tank, but below the max level label.
3. Reattach the lid to the humidifier, ensuring that the oval tab on the lid lines up with the cut out on the rear of the humidifier.
4. Connect the plug to a wall socket.
5. Press the power button to turn the unit on.
6. Use the control panel to adjust the mist output and turn the illumination on and off.

Note: If the water level is too low, the display panel will flash red for 60 seconds before powering off.

CONTROL PANEL



The + and – buttons can be used to adjust the mist output. The current mode is indicated by the colour of the light around the control panel.

MIST SETTING	INDICATOR COLOUR
High	Blue
Medium	Green
Low	Red

The LED button can be used to turn the LED lighting on and off, both around the control panel and within the water tank.

Notes:

- There may be water droplets on the mist outlet during operation. This is normal.
- When the water tank is full, the mist output will be reduced, although the unit will reach normal operation within 15 minutes.
- Do not remove the lid during operation as this will affect the mist output.
- Empty the machine and keep it dry when not in use. If water is left in the humidifier, the water will deteriorate and bacteria may grow.

WATER LEVEL WARNING

When the water level is lower than the probe within the tank, the ring around the control panel will flash red, and after a minute the humidifier will switch off.

FILLING THE WATER TANK

Before refilling the water tank, ensure that the humidifier has been turned off and unplugged. Do not use purified or distilled water in the humidifier, since it does not contain the minerals required for operation.

Ensure that water added to the humidifier is at room temperature, as using water that is too hot or cold could damage the unit.

1. The top opening design of the humidifier is designed for easy refilling.
2. The unit should be refilled using a jug, rather than placing the unit directly under a tap.
3. The water level must be above metal probe at the rear of the tank, but below the max level label.

AROMATHERAPY FUNCTION

The humidifier also contains a separate chamber for aromatherapy oils. To use the chamber, remove the lid from the chamber at the top of the unit. Place a piece of non-woven fabric into the chamber (such as cotton wool), and add a few drops of your chosen aromatic oil, before replacing the lid on the chamber.



Do not place essential oils directly into the water, as this is likely to lead to damage to working parts of the humidifier.

HANDLING OF AROMATIC AND ESSENTIAL OILS

- Do not expose oils to an open flame
- Store in a location which is out of reach of children
- If oils are spilt, rinse with water and allow to air dry. Do not use a hair dryer.
- Avoid contact with eyes and skin.
- For further information regarding the handling of oils, advice should be sought from the oil manufacturer.

CARE AND MAINTENANCE

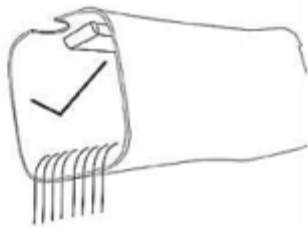
To ensure that the humidifier continues to function correctly, and performs to its capacity, it is highly recommended that you clean the humidifier weekly. Failure to keep the unit well maintained will affect the quality of atomization, and could have a negative on the air quality.

Turn off the humidifier and unplug from the mains before attempting cleaning or maintenance. Do not use harsh detergents, solvents or abrasive detergents to clean the humidifier.

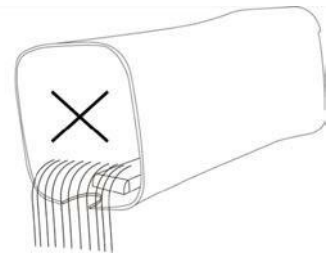
The unit is provided with a small brush to clean the atomiser. Do not use sharp objects, as they are likely to scratch the surface of the atomiser.

The water tank and outer casing can be cleaned using a soft damp cloth. Once cleaned, wipe down with a dry cloth. For a deeper clean of the water tank, a white vinegar solution can be used.

EMPTYING THE WATER TANK



When emptying the water tank, ensure that the cut out for the lid is on the top side of the unit. Pouring water out with the cut out on the underside may lead to damage to electronic components within the unit.

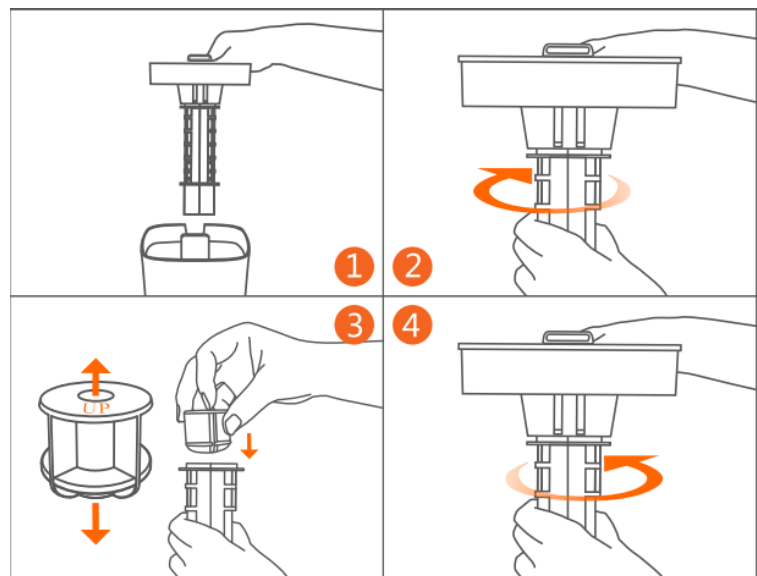


REPLACING THE FLOAT VALVE

If the amount of mist released by the unit decreases, or the unit starts to emit an abnormal noise, it may be an indication of a defective float valve. Please inspect the float valve, and replace if necessary following the steps below:

Before replacing the float valve, ensure the unit is turned off and unplugged.

1. Remove the lid from the humidifier.
2. Remove the float tube from the lid by twisting it anticlockwise.
3. Slide the float valve out of the tube. Slide the replacement valve into the tube, ensuring that the UP label is pointing towards the lid.
4. Reattach the float tube to the lid by locating the tabs within the slots on the lid, and twisting clockwise.



TROUBLESHOOTING

Problem	Possible Cause	Solution
Quantity of mist reduced	Precipitation on ultrasonic oscillator's surface	Use the small brush to clean it
	Water exceeds the max water line	Remove the excess water
	Float valve is stuck, not in the designated location	Reposition the float valve so that it slides within the float tube.
	Faulty fan	Speak to manufacturer / retailer
Mist smells bad	New appliance	Clean the water tank with white vinegar, wipe dry, then leave with the lid off in a cool area for some time
	The water tank is dirty	Clean the water tank Replace the water
No mist and no airflow from the outlet, but the power light is on	Water exceeds the max water line	Remove the excess water
	Fan broken	Speak to manufacturer / retailer
No mist, but the power light is on and airflow from the outlet	Float valve is upside down	Change the direction of the float valve ensuring the side labelled "up" is at the top.
	The atomizer is damaged	Speak to manufacturer / retailer
	Space between the lid and the tank	Ensure the lid is correctly fitted.
Abnormal noise	Placed on a un level surface	Move to a flat level surface
	Float valve has deteriorated	Replace the float valve
	Objects fallen into the fan	Turn the humidifier off, empty the water tank, and ensure there is no foreign objects inside.
No mist, no airflow from the outlet, no power light	The power is not plugged in or the unit is not turned on	Check the circuit and turn on the power button
	Water flow into the fan	Turn off, pour out water, and dry the humidifier upside down for 24 hours.
Front indicator flashing red	Water level is lower than the detecting needle	Fill it with water
	Water tank is empty	Fill it with water

TECHNICAL DATA

Working Voltage	100-240V
Rated Power	25-28W
Rated Frequency	50/60HZ
Humidity per Hour	High mode 250ml/h
	Medium mode 200ml/h
	Low mode 150ml/h
Water capacity	2.0L
Continuous	8h-10h
Dimensions	150x150x325mm



Disposal: Do not dispose of this product as unsorted waste. Collection of such waste must be handled separately as special treatment is necessary.

Recycling facilities are now available for all customers at which you can deposit your old electrical products. Customers will be able to take any old electrical equipment to participating civic amenity sites run by their local councils. Please remember that this equipment will be further handled during the recycling process, so please be considerate when depositing your equipment. Please contact the local council for details of your local household waste recycling centres.

UK PRODUCT SUPPORT

www.electriQ.co.uk

Please, for your own convenience, make these simple checks before calling the service line.

If the unit still fails to operate call: 0871 620 1057 or complete the online form

1. Is the unit plugged into the mains?
2. Is the power supply working?
3. Have you followed the troubleshooting suggestions?

Office hours: 9AM - 5PM Monday to Friday

www.electriQ.co.uk

Unit J6, Lowfields Business Park
Lowfields Way, Elland
West Yorkshire, HX5 9DA